



北京師範大學

# Sino-Finnish Joint Learning Innovation Institute -From Chinese Perspectives

Vice President ZHOU Zuoyu

[www.bnu.edu.cn](http://www.bnu.edu.cn)

2016.5.16

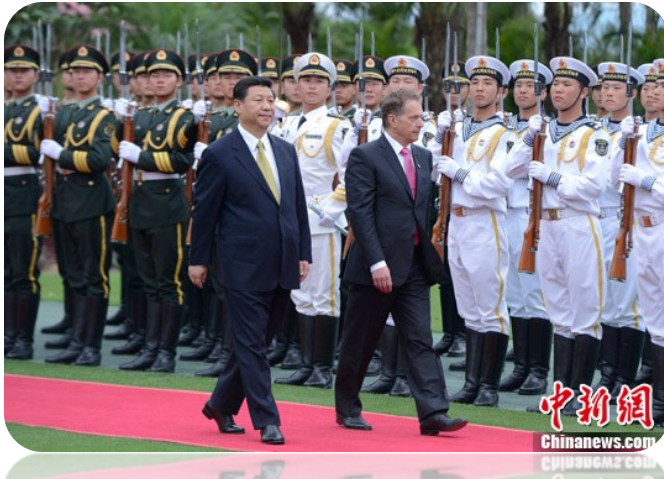


# Three Questions:

---

- **Where did we start?**
- **What are our principles of learning and teaching?**
- **what are we going to do?**

# Where did we start?



March 23, 2014 President Xi Jinping and President Sauli Niinisto



June 12, 2015, Vice Premier Liu Yandong and Ms. Maria Lohela

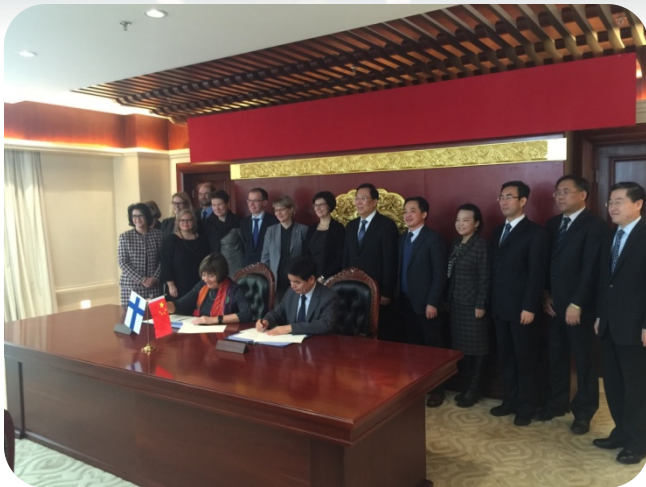


November 10<sup>th</sup> 2015 at the Great Hall of the People  
The event will be honored with her presence by H.E. Speaker of Parliament of Finland, Ms. Maria Lohela.



**MEMORANDUM OF COOPERATION ON  
STRENGTHENING COMPREHENSIVE  
COOPERATION ON EDUCATION  
2015.6.12**

**Anita LEHIKONEN & Vice Minister HAO  
Ping**



**Sino-Finnish Joint Learning Innovation Institute  
2015.11.16**

**Signing Ceremony at Chinese MOE  
Agreement Signed by President DONG Qi  
from BNU and Vice-Rector Anna from HU.**



# Where did we start?

## BNU and Finnish Collaborations

# BNU Background

- One of the oldest Chinese universities
- Education Science and Teacher Education
- Research-intensive
- Comprehensive



Normal refers to institutions that aim to train school teachers, originating from the French word “normale” in École Normale Supérieure de Paris.

# Outstanding Alumni



**Nobel Prize in Literature**

— Yan Mo



**Minister of Ministry of Education**

— Guiren Yuan



# BNU Placement

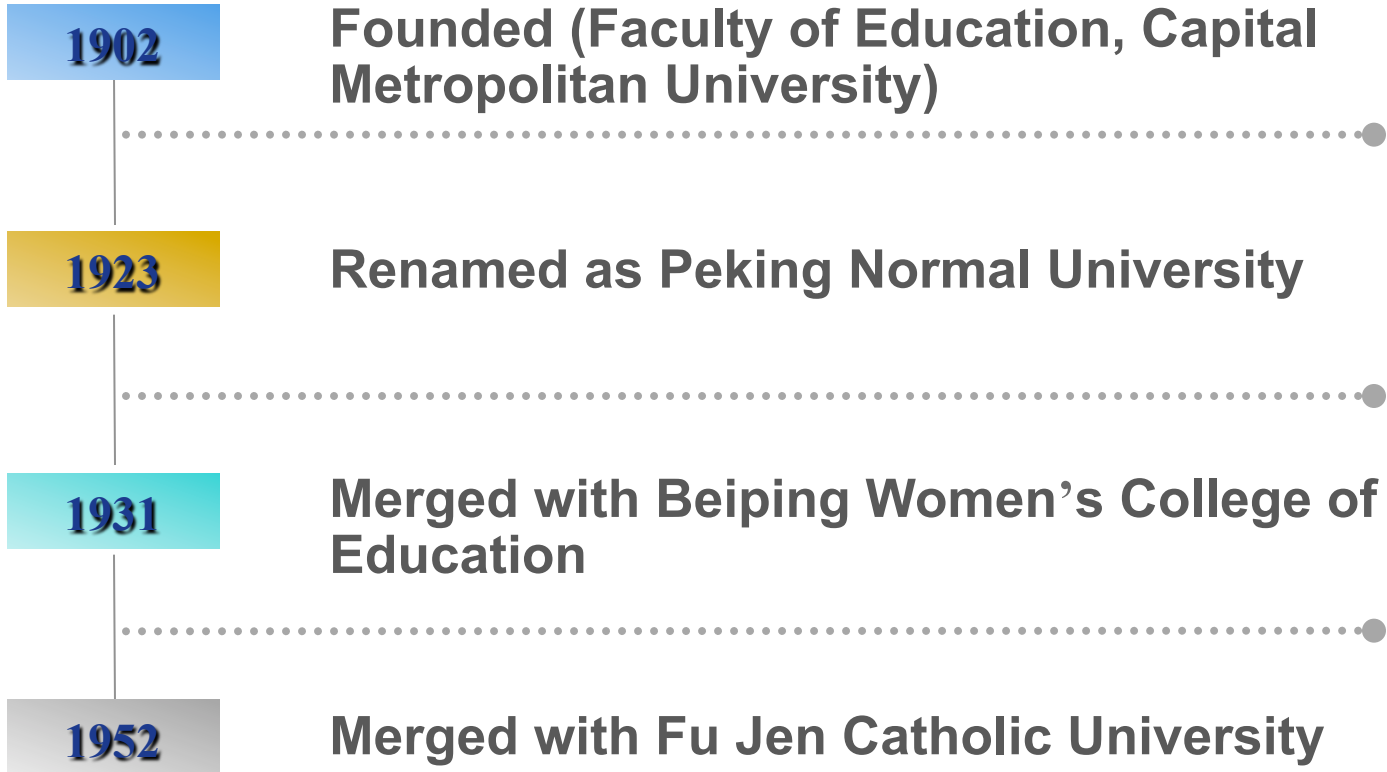


- Among the 755 Chinese universities of 4 years or more
- Among the 112 universities of the State Project 211
- Among the 75 universities supervised by Ministry of Education
- Among the 39 universities of the State Project 985





# History of BNU

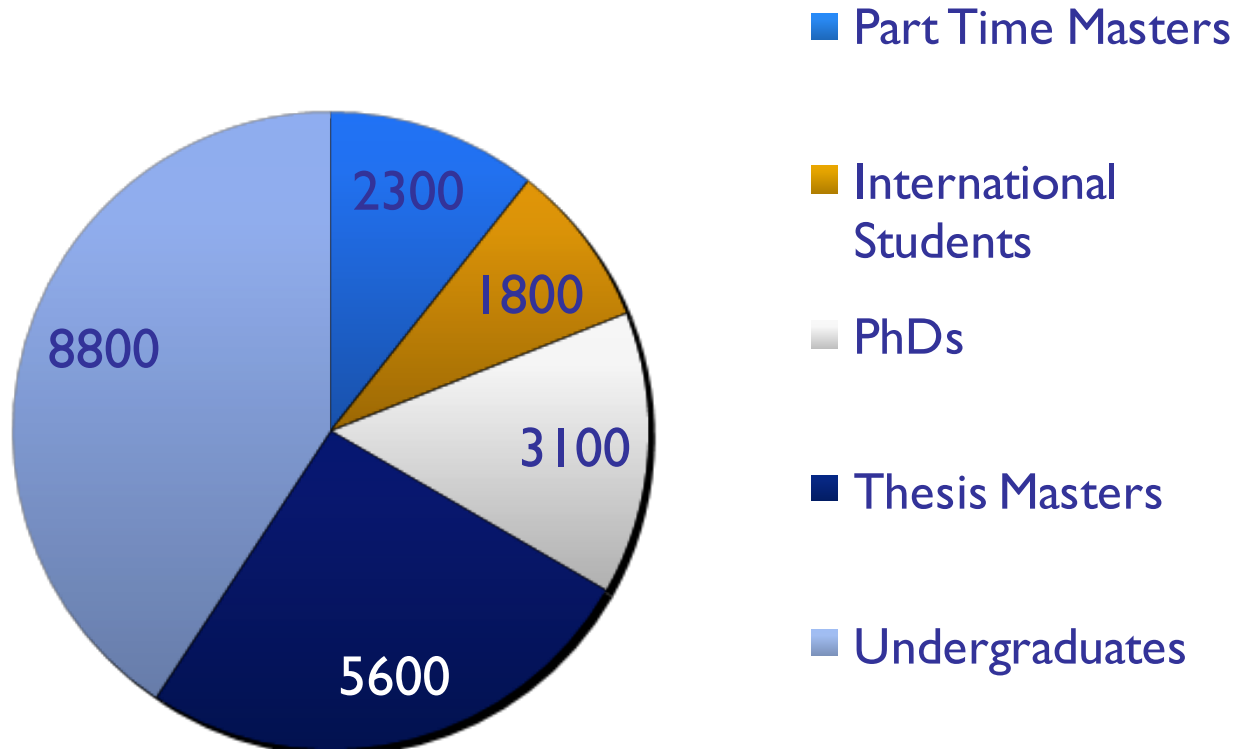


# BNU Academics

- 1 faculty body
- 26 colleges and schools
- 2 departments
- 43 research institutes and centers
- 62 Bachelor Programs
- 148 Master Programs
- 108 Doctoral Programs
- 25 Post Doctoral Programs



## Student Breakdown





# BNU Research Strengths

- Education
- Psychology
- Ancient Chinese History
- Ecology
- Geography
- Chinese Language & Literature
- System Science
- Drama & Film
- Educational Economics & Administration
- Physical Chemistry
- Cell Biology
- Folklore Studies
- Marxist Philosophy
- Theoretical Physics
- Environmental Science
- Mathematics

# BNU Research Strengths

## State Key Laboratories

- Cognitive Neuroscience & Learning
- Earth Surface Processes & Resource Ecology
- Remote Sensing Science
- Water Environment Simulation & Control



## Key Laboratories of Ministry of Education

- Beam Technology & Material Modification
- Cell Proliferation & Control
- Environment Change & Natural Disasters
- Mathematics & Complex Systems
- Organism Diversity & Ecology Engineering
- Water & Sediment Sciences
- Radiopharmaceuticals
- Theoretical & Computational Photochemistry

# BNU Affiliated Schools

- Experimental Kindergarten
- Experimental Primary School
- Experimental High School
- Second Experimental High School
- Third Experimental High School
- Totally around 60 affiliated school outreach



# BNU's Branch Campus



➤ Zhuhai Campus  
➤ Located near Macau



# BNU Internationalization

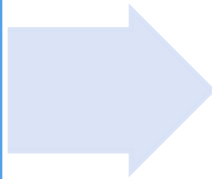
- International sister universities: 300+ in 34 countries and regions
- International visiting scholars: 900 times per year
- Faculty members on visits abroad: 1,300 times per year



# Joint Efforts of CEREC and FERC

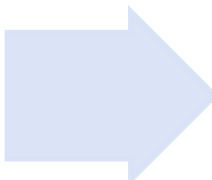


CEREC  
(2011)



■ **Sino-Finnish Education Dialogue**

FERC  
(2013)



■ **Joint-Teaching**

■ **Joint-Research and Forum**

■ **Joint-Training**

<http://www.compe.cn/english/sino/>

# Future Learning in Today's World

-First Joint seminar of the Sino -Finnish Learning

Factory



2013 Nov 19: Ministry of Education

“Sino-Finnish Dialogue on Learning and Education Policy”

Minister of MEC, Krista Kiuru, Previous Ambassador Jari Gustafsson

Nov 20: Beijing Normal University

Session 1: Teacher professionalism and effectivity – challenges in the changing world

Session 2: New learning ecosystems – combining fun and gain



# “Social Learning Project”



Prof. Timo Nyberg from Aalto university



# Sino-Finnish Learning Garden and EduTech Meeting



June 9, 2014



# Madam Liu visits HU and Rovio, 2014 Oct. 20



**Oct. 20<sup>th</sup> 2014, Helsinki**



**Letter of Intent of Joint Research Center between BNU and Rovio**

# President Dong visits HU and Rovio, Sep. 20, 2015



北京师范大学心理学院  
School of Psychology Beijing Normal University



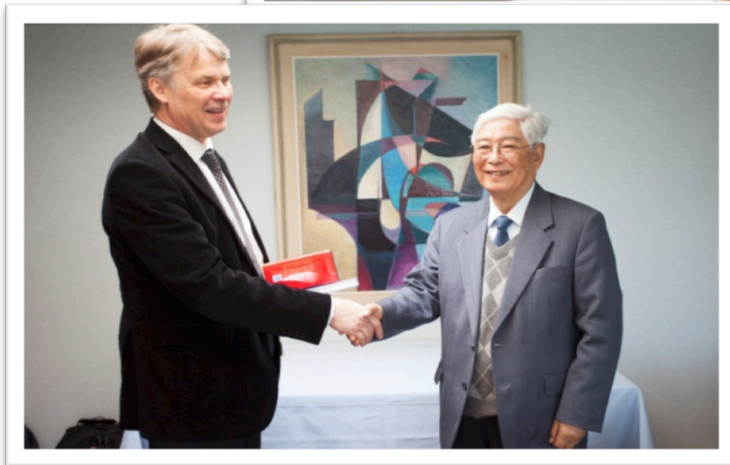
## BNU-Rovio快乐学习联合实验室

The BNU-Rovio Joint Laboratory of Fun Learning



# Sino-Finnish Education Dialogue

When North Meets East: Learning Garden of Sino-Finnish Education Dialogue  
between Professor Hannele Niemi and Professor GU Mingyuan







# Basic principles of learning and teaching

## ● OPEN

- Outcome oriented
- Process and program matter
- Engagement makes a difference
- Networking without borders

## ● TRUST

- Teacher professional development
- Research based teaching and learning
- Unleashing creativity
- Student centered
- Team building



# What are we going to do?

**Future Plan**  
**Sino-Finnish Joint Learning Innovation Institute**

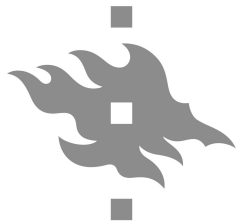
# Sino-Finnish Joint Learning Innovation Institute



Chinese  
University  
Networks  
+Enterprises



Joint  
Institute-“Sino-  
Finnish  
Learning  
Garden”



UNIVERSITY OF HELSINKI

Finnish  
University  
Networks  
+Enterprises

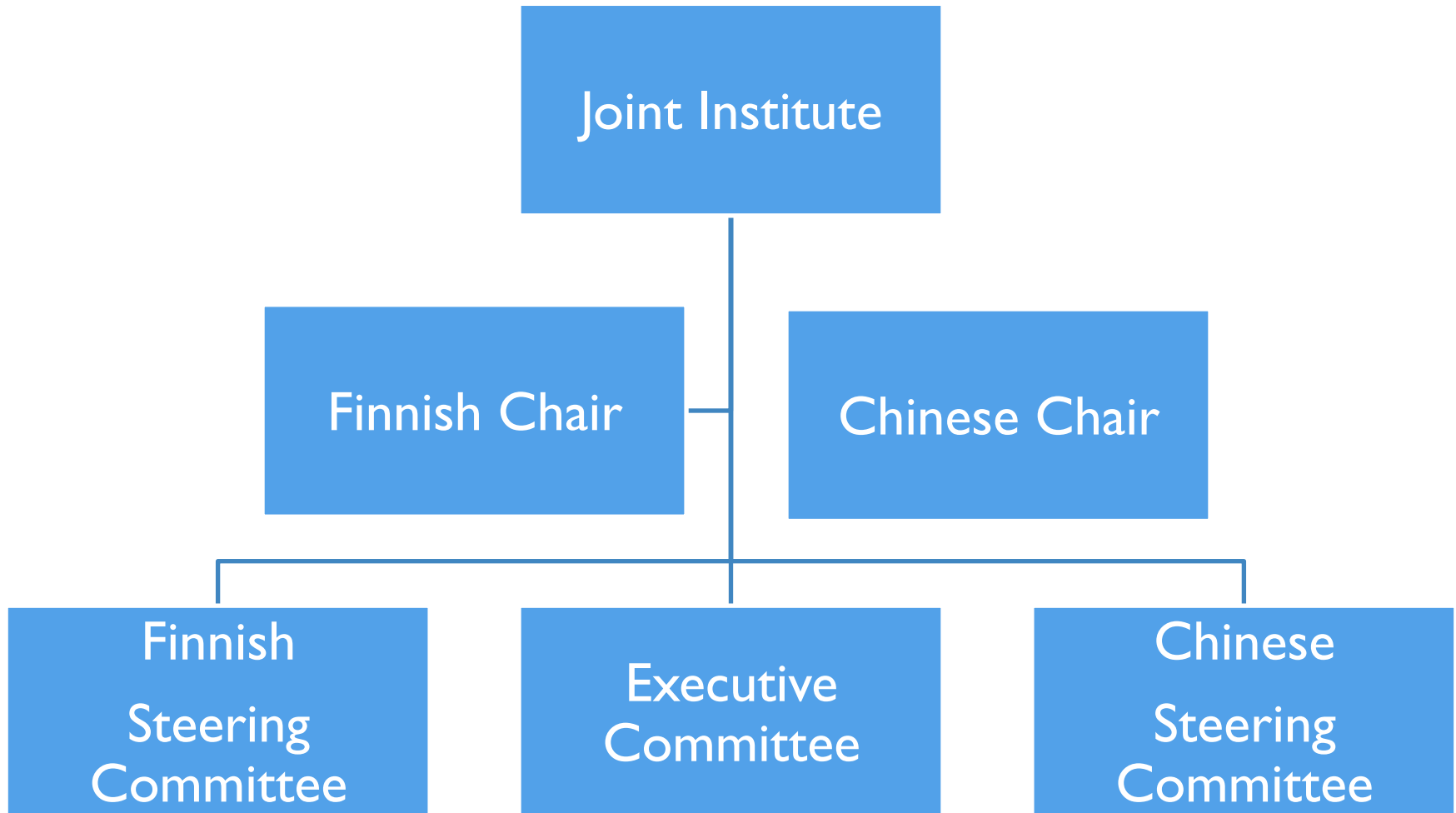
1. Sino-Finnish Learning Research Innovation Center

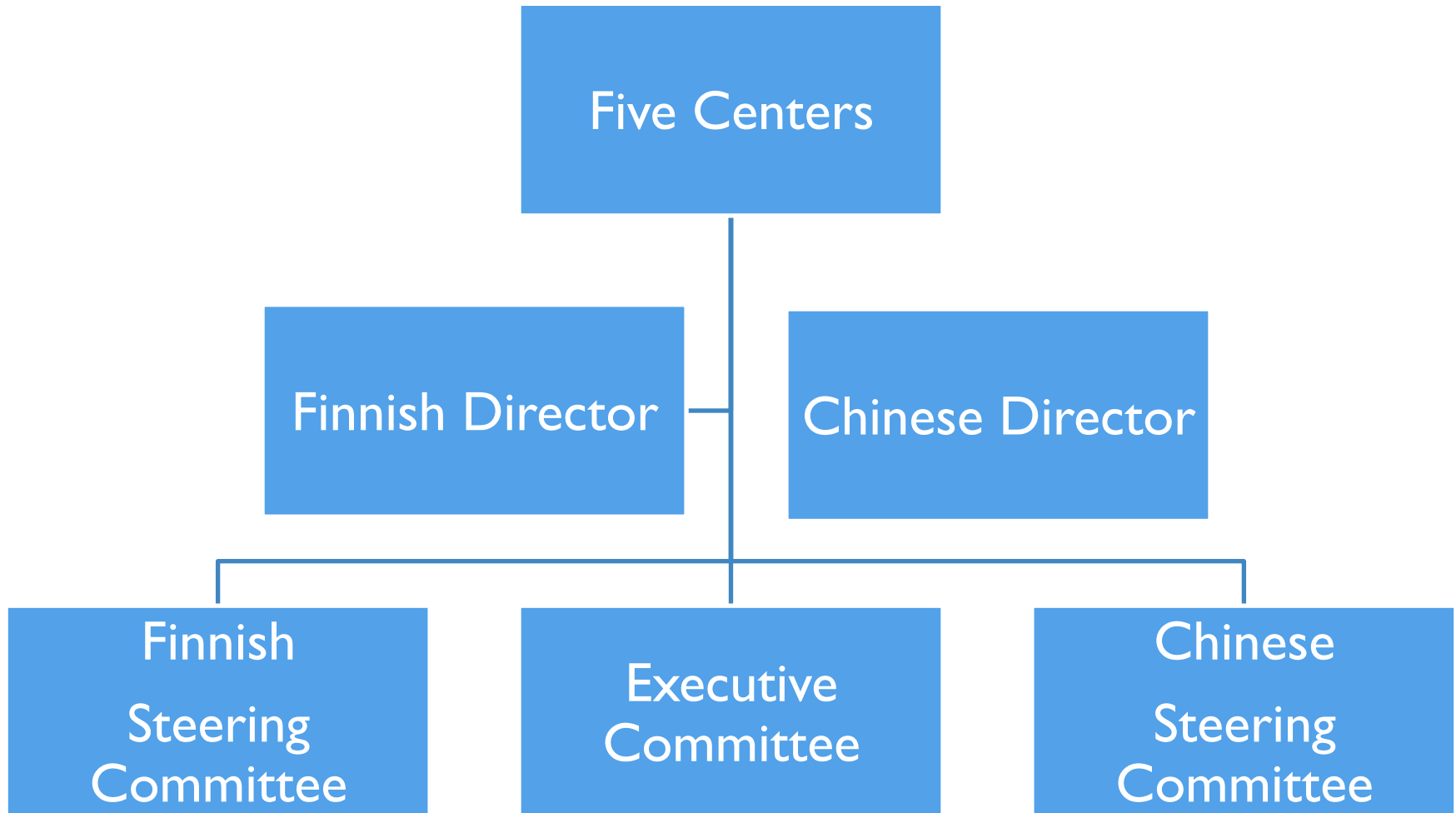
2. Sino-Finnish Learning Garden Experience Center

3. Sino-Finnish Teacher Training Center

4. Sino-Finnish Education ICT Center

5. Sino-Finnish Double/Dual Degree Center







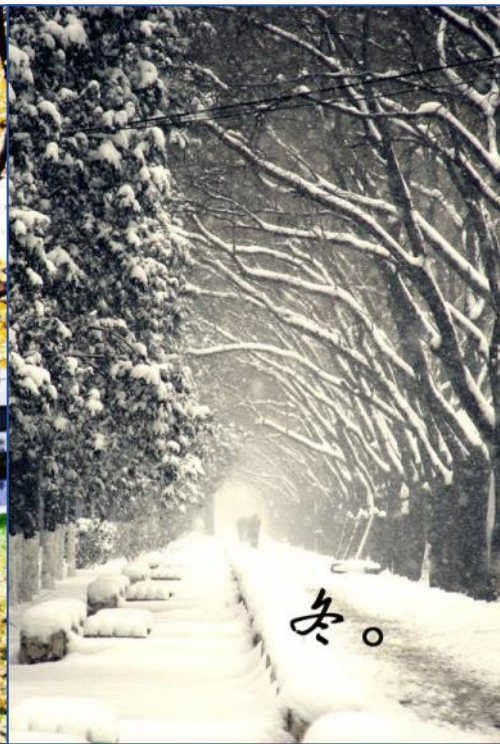
**“To co-create inclusive, student-oriented learning solutions for better fostering 21st century skills among students in China and Finland”.**

**Sino-Finnish Joint Learning Innovation Institute**

MAL U



北京師範大學



*Thank You!*